

# Southern Crossroads (SoX)

MS-CC Workshop—October 29, 2024

Natalie Palmer

Georgia Tech – Southern Crossroads (SoX)

[natalie@sox.net](mailto:natalie@sox.net)

# What is Southern Crossroads-SoX?

## Southern Crossroads (SoX)

- Also known as Southern Light Rail (SLR)
- 501(c)3 organization that serves the Southeastern U.S. Research and Education community.
- SoX provides highspeed, global connectivity and other commodity services.
- Serves as the Southeast connector to Internet2, ESnet and other major U.S as well as International research networks.
- The regional network connecting AL, GA, SC, TN, with national research and education backbones.

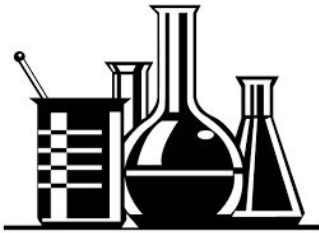


## Affiliate organization of Georgia Tech

- SoX partners with Georgia Tech to push forward strategies that each organization is working toward.
- Georgia Tech has strategic goals to “connect globally” and to “expand access”.
- Goals and Mission align: Provide reliable cyberinfrastructure, high-performance global connectivity, and services.
- Enables collaboration and partnerships for our community.



# Who does SoX serve?



- Colleges and universities
- K-12 education networks
- Federal agencies
- Government laboratories and non-profit institutions that promote research in the Southeast region of the United States.
- SoX core services are enabled from Atlanta, GA and Nashville, TN



-  UAS/ORNL
-  SoX/FLR
-  400G
-  100G

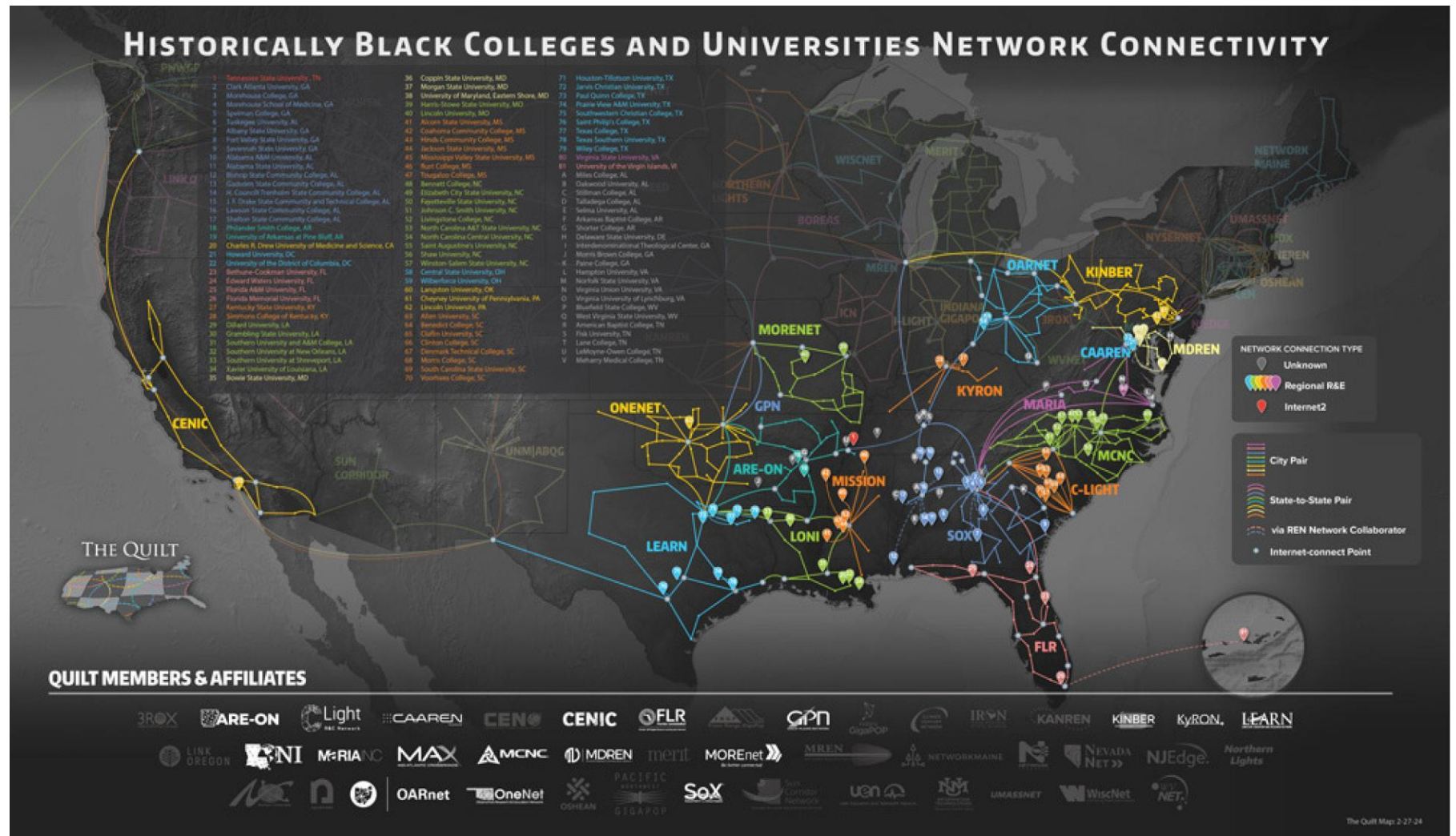
 SoX router node

# THE QUILT: What it is and What it does

- Through The Quilt, non-profit regional research and education networks (like SoX) collaborate to develop, deploy and operate advanced cyberinfrastructure that enables innovation in research and education.

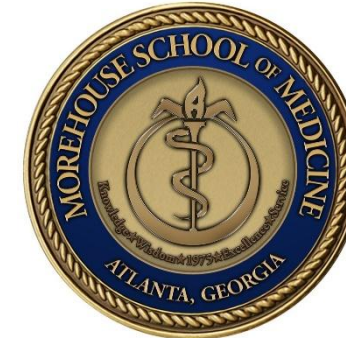
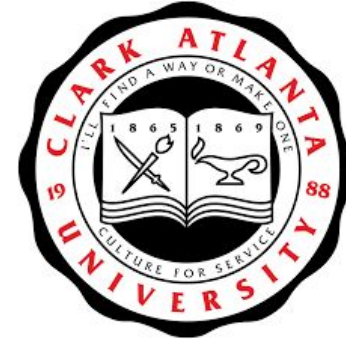
- Nearly 50 members and affiliates across the US.

- SoX is a Quilt member



# SoX and HBCUs

**LOOK WHO'S  
CONNECTING...**



# Our Team



**Cas D'Angelo**

IT Professional  
Georgia Tech

President  
Southern Crossroads



**Natalie Palmer**

Senior Director SoX IT Engagement  
Georgia Tech

Vice President  
Southern Crossroads



**Scott Friedrich**

IT Professional  
Georgia Tech

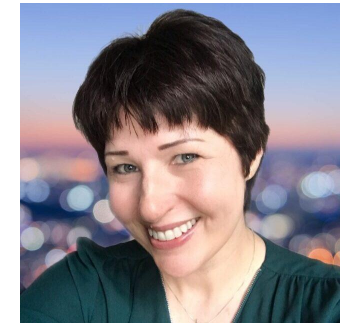
Lead Engineer  
Southern Crossroads



**Joy West**

Assistant Director Business Operations  
Georgia Tech

Assistant Treasurer  
Southern Crossroads



**Melanie Paulina**

Administrative Operations Specialist  
Georgia Tech

Assistant Secretary  
Southern Crossroads

# NSF Campus Cyberinfrastructure Award ID: 2346630

CC\* Regional Networking: Advancing Research and Education  
at small colleges in Rural and Metropolitan Alabama and  
Tennessee through IT Architecture Enhancements

Project Period: June 1, 2024 - May 31, 2026





**NSF Award# 2346630:** CC\* Regional Networking: Advancing Research and Education at small colleges in Rural and Metropolitan Alabama and Tennessee through IT Architecture Enhancements

- Bringing advanced networking campus cyberinfrastructure to under-resourced colleges and universities in Tennessee and Alabama.
- Regional science DMZ and measurement instrumentation to facilitate data movement
- Training and workshops for IT, faculty, researchers, and students





# NSF CC\* QUAD CHART

## APRIL 19, 2024

**Quad Chart for:** NSF Award# 2346630: CC\* Regional Networking: Advancing Research and Education at small colleges in Rural and Metropolitan Alabama and Tennessee through IT Architecture Enhancements

### Challenge Project Seeks to Address:

- Enhancing network connectivity to under-resourced Colleges and Universities
- Connect to regional, national, and international networks for collaboration, compute resources, access to instruments, and instructional resources

### Solution(s) or Deliverables:

- Provide equipment and 10G circuits for enhanced networking at 5 under-resourced campuses
- Measure performance at each campus and enable regional science DMZ
- Train and hold workshops on research tools and resources as well as IT cyberinfrastructure



### Scientific Impact or Broader Impact:

- Computation Models for Beetles Microbiomes in Stratosphere
- Research in this project includes statistical and machine learning techniques for data analysis and has connected gut microbiomes to conditions such as depression, anxiety, obesity, and autism
- Integration of Process Models and Deep Learning Algorithms with Large Hydrological Datasets for Robust Groundwater Recharge Prediction

### Metadata tag:

- <https://www.gatech.edu>
- <https://www.sox.net>
- We are coordinating with collaborators

# Southern Crossroads (SoX)

MS-CC Workshop—October 29, 2024

Natalie Palmer

Georgia Tech – Southern Crossroads (SoX)

[natalie@sox.net](mailto:natalie@sox.net)